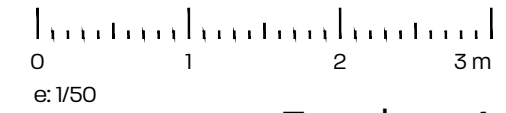
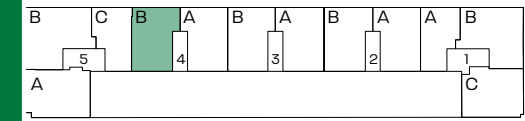
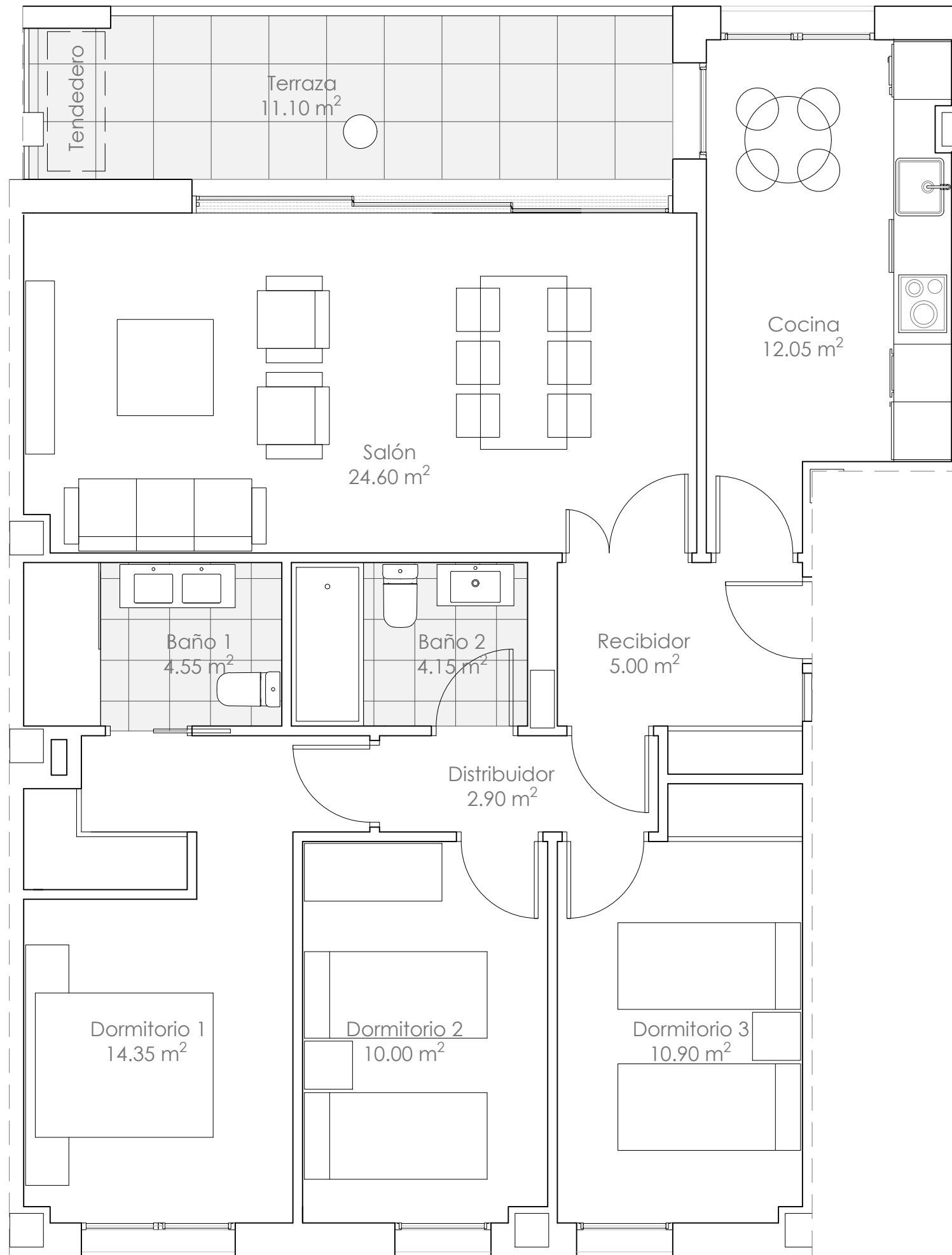


# Escalera 4

## Vivienda 10-30 B



### Escalera 4

#### vivienda 10-30 B

- 3 Dormitorios -

Superficies Útiles (m<sup>2</sup>)

<b>Superficie Útil Cerrada</b>	<b>88.50 m<sup>2</sup></b>
Recibidor	5.00 m <sup>2</sup>
Cocina	12.05 m <sup>2</sup>
Salón comedor	24.60 m <sup>2</sup>
Distribuidor	2.90 m <sup>2</sup>
Baño 1	4.55 m <sup>2</sup>
Baño 2	4.15 m <sup>2</sup>
Dormitorio 1	14.35 m <sup>2</sup>
Dormitorio 2	10.00 m <sup>2</sup>
Dormitorio 3	10.90 m <sup>2</sup>
<b>Superficie Útil Abierta</b>	<b>11.10 m<sup>2</sup></b>
<b>Superficie Útil TOTAL</b>	<b>99.60 m<sup>2</sup></b>

